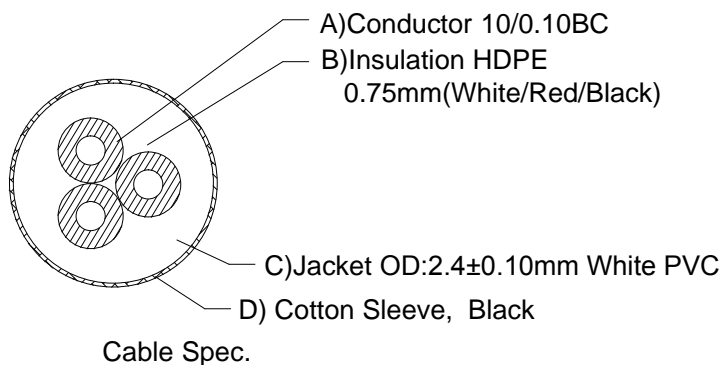
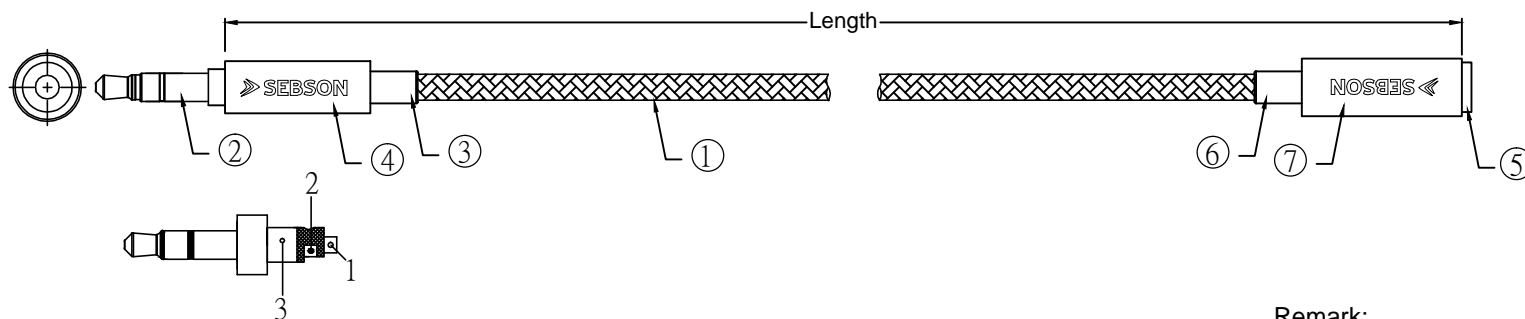




THESE DRAWINGS AND SPECIFICATIONS ARE THE PROPERTY OF SEBSON AND SHALL NOT BE REPRODUCED COPIED OR USED IN ANY MANNER WITHOUT THE PRIOR WRITTEN CONSENT OF SEBSON

**RoHS Compliant**

REV.	REVISED DESCRIPTION	DATE	CHECKED
A0	FIRST RELEASE	2019/11/06	



PIN ASSIGNMENT

P1	WIRE TYPE	P2
PIN1		PIN1
PIN2		PIN2
PIN3		PIN3

Remark:

- 100% Open/Short Test
- Conductive Resistance: 2ohms MAX
- Insulation Resistance: 10M ohm MIN.
- The product is Reach/RoHS compliant.

Item NO.	Length(m)
AUX_1M1F_1M	1.0
AUX_1M1F_2M	2.0
AUX_1M1F_5M	5.0



ITEM	DESCRIPTIONS & SPECIFICATIONS	QTY	REMARK
⑧	Cable tie		Cable tie, Black
⑦	Shell		Al Shell, Black, "SEBSON" logo
⑥	External Mold		Outer Mould PVC, Black
⑤	Connector		3.5 Stereo Female, Gold-Plated
④	Shell		Al Shell, Black, "SEBSON" logo
③	External Mold		Outer Mould PVC, Black
②	Connector		3.5 Stereo Male, Gold-Plated
①	Cable		(10/0.10mmBC+PE)*3C+ PVC White OD:2.4mm +Cotton Sleeve, Black

TOLERANCES UNLESS OTHERWISE STATED	
X.	= ± 1
.X	= ± 0.2
.XX	= ± 0.1

**SEBSON address: Gernotstrasse 17  
44319 Dortmund Germany**

ERP NO.:		SAMPLE DWG NO:	
ZG No.:		REVISION	A0
CUSTOMER:		UNIT	mm
CUSTOMER P/N:		SCALE	NO
DESCRIPTION	3.5mm Stereo Male to Stereo Female	PAGE NO	1/1
		DATE	2019/11/06
APPROVAL		CHECKED	
		DRAWN	