



MANUAL

10W Qi Wireless Charger



Image is an example only

Product number: NT30543

PACKAGE CONTENT

Congratulations on the purchase of your new device. Before attempting to use the device read the instructions carefully and make sure the following objects are included in the packaging:

Pieces	Accessory	Note
1	10W Wireless Charger	
1	Micro USB cable	-
1	Manual	-

This particularly applies to the safety instructions. Failure to do so may result in personal injury or damage to the product. The user manual is based on the standards and rules in force in the European Union. When abroad, you must also observe country-specific guidelines and laws.

TECHNICAL DETAILS

Dimension	116* 100*15 mm
Input/output	5V/2.1A,9V/1.5A
Frequency	LF
max. transmission	10W
Wireless Charging output	10W
Charging Cable	1x Micro USB cable
Net Weight:	79 g

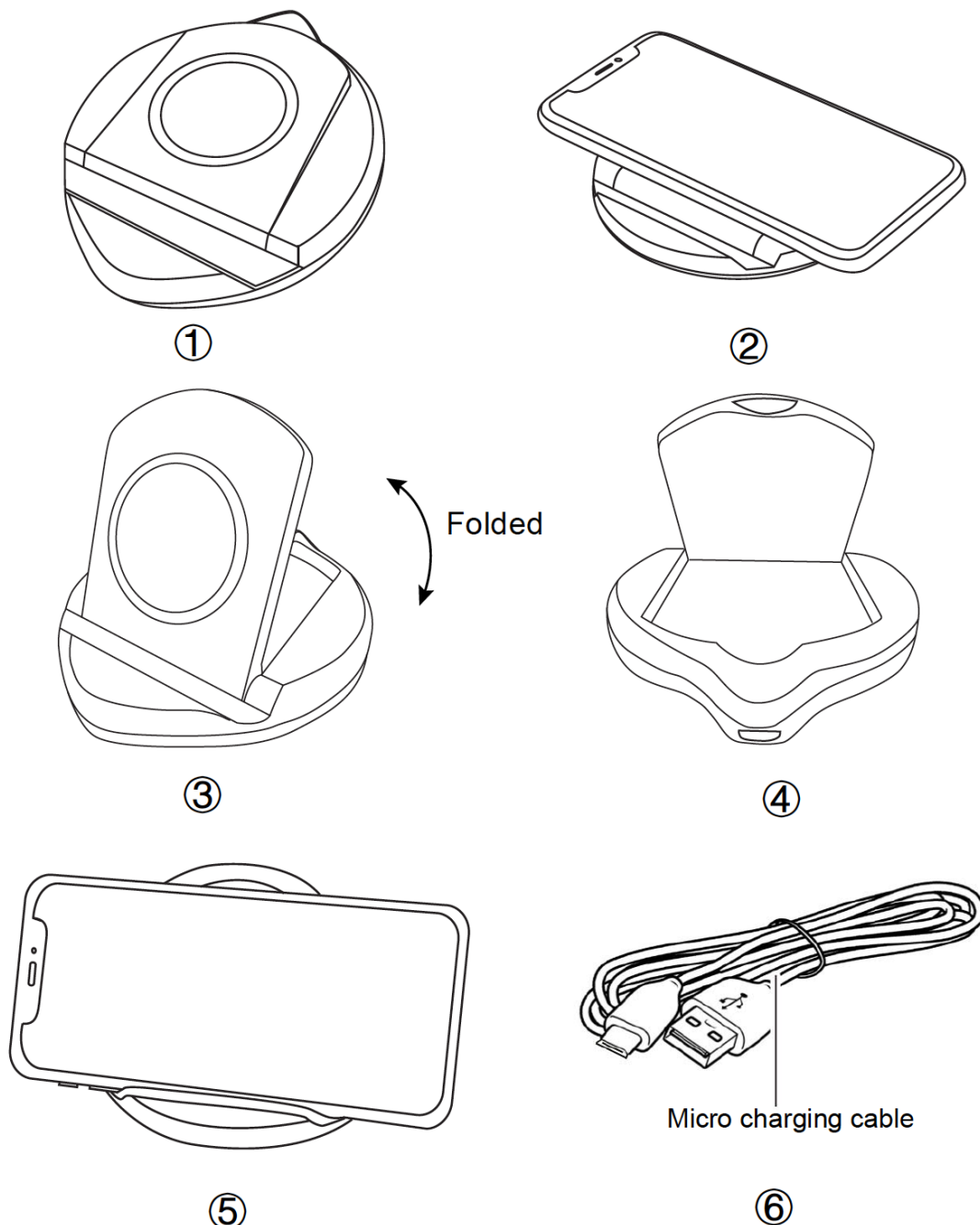
Proper Use

The product is exclusively designed for charging electronic devices, such as mobile phones, tablets or cameras. The wireless charging function can only be used with compatible mobile devices. It is only intended for private use and not

suitable for commercial purposes. The product is not a children's toy. Only use the product as described in this user manual. Any other use is considered improper and may result in damage to property or persons. The manufacturer or vendor cannot be held liable for damages or injury incurred through improper or incorrect use.

Charging Your device.(See Fig)

1. Connect the micro usb cable to the USB output.
2. Put your compatible device to be charged on the centre of the wireless charging surface. The charging starts automatically



SAFETY NOTES

For your own safety and for long enjoyment of our product, please follow the following safety instructions:

- Please use device as described in the manual.
- Please keep the device dry and use in dry environment only. Do not touch with wet hands.
- Keep away from damp, high temperature, dusty, erosive and oxidative environment.
- Do not open cover and do not touch inner parts.

DISPOSAL

This device contains materials that must not be disposed of as household waste. Please check local laws concerning the applicable disposal regulations. Protect the environment by participating in recycling programs.



DECLARATION OF CONFORMITY

LEICKE GmbH here with declares that the devices NT30543 comply with the RED 2014/53/EU and ROHS 2011/65/EC & 2015/863 & 2017/2102 regulations. The declaration of conformity can be found at: www.leicke.com/de/products/NT30543



CONTACT

If you have any questions, please feel free to contact us.

LEICKE GmbH
Dohnanyistr. 28
04103 Leipzig
Germany

Web: www.leicke.com
Mail: info@leicke.com

