



Manual

LED Backpack
Animate Pack



Article number MN60316

Thank you for purchasing the LED backpack 'Animate Pack' from LEICKE.
Please read these instructions carefully before using the product in order to achieve optimum performance.

Keep the instructions for future reference. The illustrations in this manual may differ from the original!

Yours, the LEICKE Team!

Introduction

At first glance, the "Animate Pack" looks like a normal backpack. But as soon as it is connected to a mobile power source, it becomes a real eye-catcher.

This backpack will be your personal mobile design and advertising space. You can send content to the backpack anywhere, anytime and show everyone your creativity.

Texts, images or animations - there are no limits to your ingenuity.

PACKAGE CONTENTS

Before attempting to use this product, please check the packaging and make sure the following items are contained within the package:

Number of Pieces	Name	Note
1	LED backpack	LED-panel incl. USB cable
1	User's Manual	-

TECHNICAL DETAILS

resolution ratio	64*64 Color dot matrix screen
screen size	25*25cm
backpack size	42*32*16cm
net weight	1.2kg
package weight	1.6kg (including product)
rated voltage	5V
power supply mode	Mobile power supply (Recommended capacity 10000mAh, continuous power supply time: 6-7h)
communication mode	Bluetooth
program support	Text / Picture / Animation

OPERATION PROCESS

1. Scan the QR code to download the “LED Space”-APP

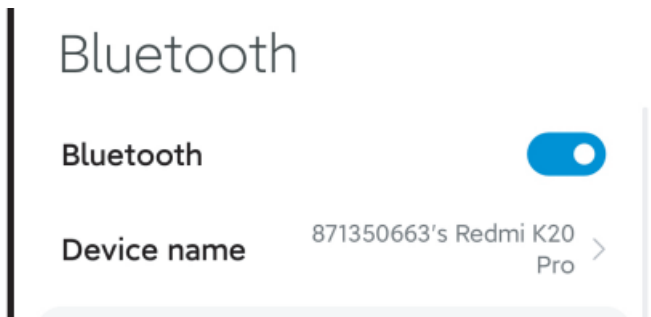


Google



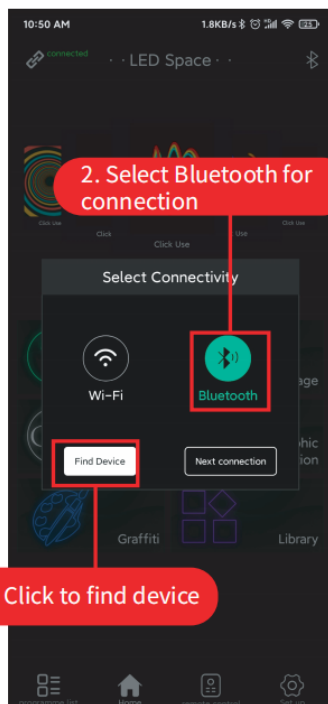
ios

2. Plug in the LED board to a power bank to start the screen. Activate the phone's bluetooth.



3. Connect your phone to the device.

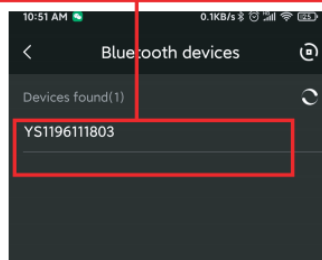
1. Keep the phone's Bluetooth on and start the LED space



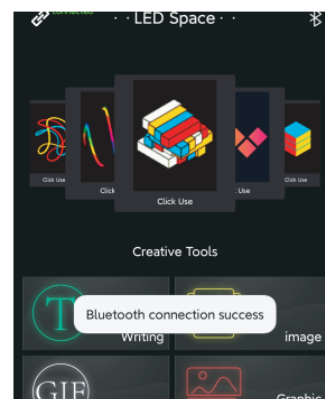
2. Select Bluetooth for connection

3. Click to find device

4. Tap your device number to connect

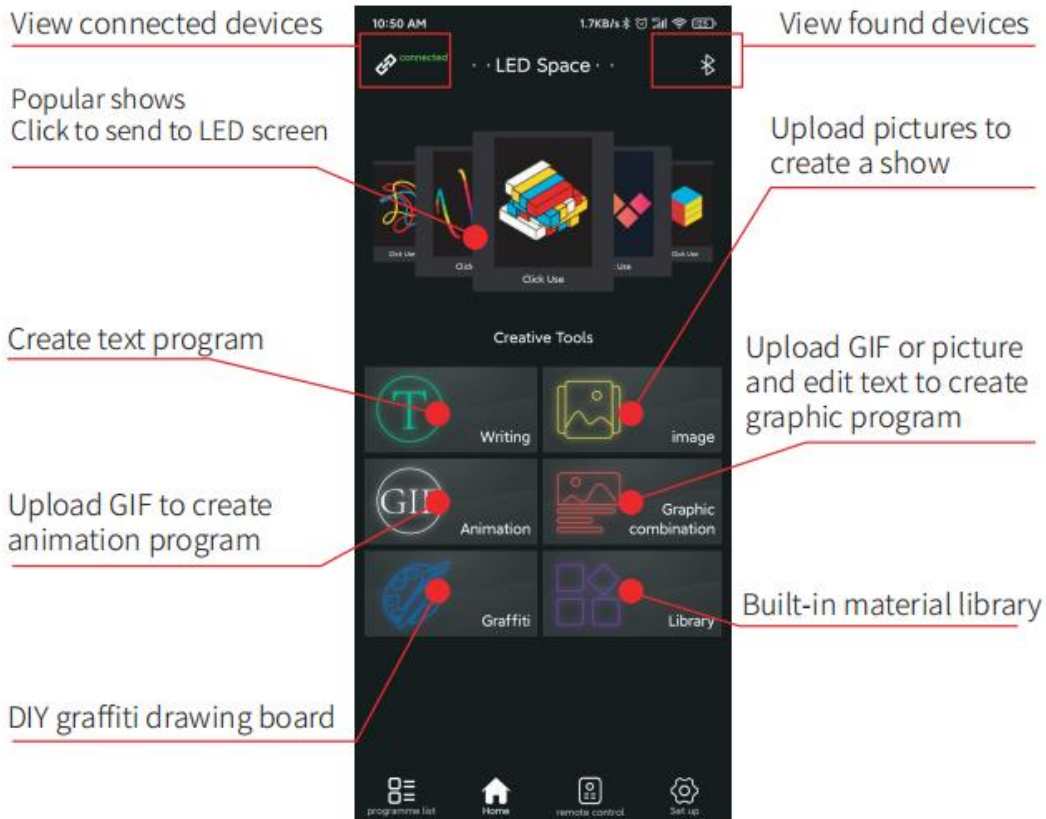


5. The connection is successful



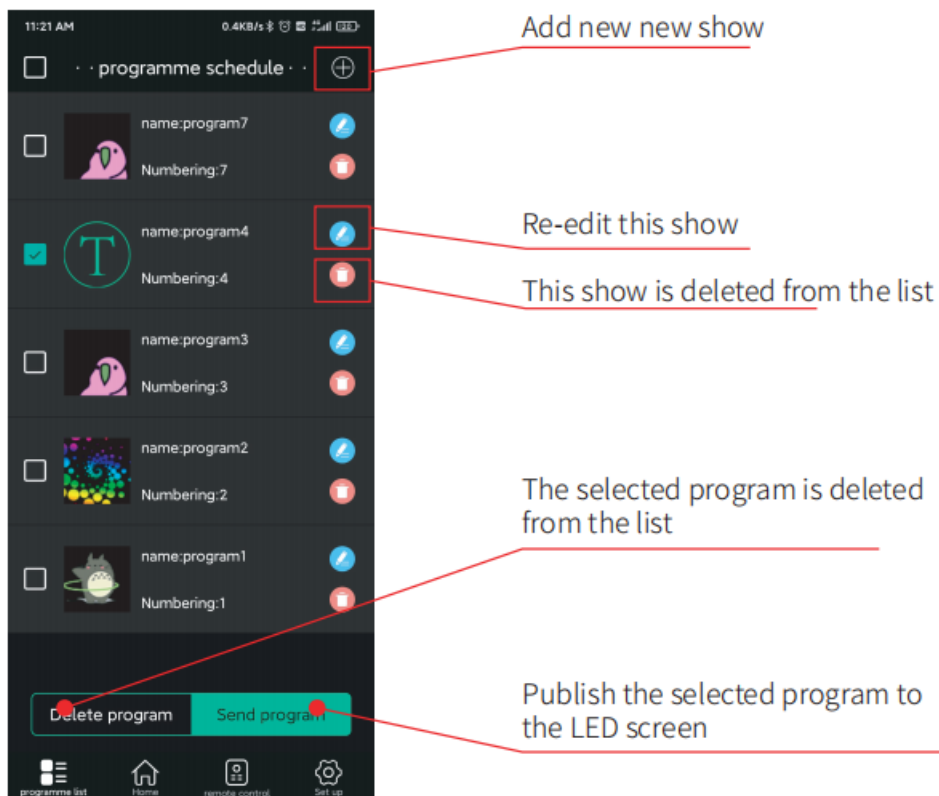
FUNCTION INTRODUCTION

1. Home screen



2. Program schedule

In addition to remote control programs, published and saved programs will exist in the program list



3. Remote control

Switch program list program/remote control program

Adjust the brightness of the LED screen

Rename remote program

LED screen off/on

LED screen test and equipment information

Remote control program previous/next

Enter-Scheduling-of-programs

Click the program thumbnail to edit this program again

New remote program

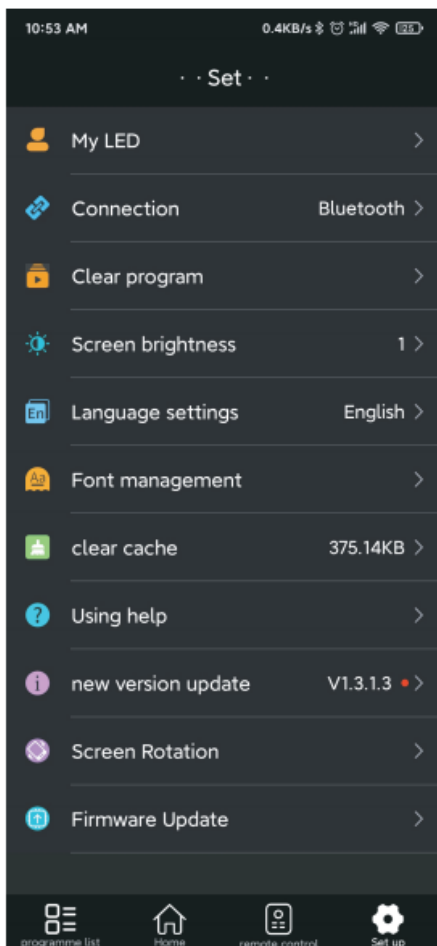
Delete all remote programs

Delete the selected remote program

Remote control program Click to play the content in real time

Send the selected remote control program, you can click to use it on the remote control after the transmission is successful

4. Settings



- My LED:** Information of connected LED screen
- Connection method:** switch the connection method to match the version of your LED screen
- Clear program:** clear the program on the current screen
- Screen brightness:** set the brightness of the LED screen
- Language setting:** freely switch 13 languages
- Font management:** view downloaded fonts
- Clear cache:** Clear software cache
- Help:** FAQ and function introduction
- Version update:** Check to update the latest version of the APP
- Screen rotation:** rotate the program direction
- Firmware update:** update LED screen built-in program

SAFETY NOTES

Please use the product as described in the manual.
Keep away from damp, high temperature, dusty, erosive and oxidative environment.
Keep the device safe from being hit or falling down.
Do not touch the LED with wet hands.
Turn off power when the LED is not in use for a longer time.
Do not open pack and do not touch inner parts.
Charging: Use original factory power adapter.

Warning: Use appropriate power supplies only. The usage of power supplies with the wrong specifications may lead to irreparable damages to your LED backpack.

Disposal

This product contains materials that must not be disposed of as household waste. Please check local laws concerning the applicable disposal regulations. Protect the environment by participating in recycling programs!



Declaration of Conformity

LEICKE GmbH herewith declares that the devices comply with the RED 2014/53/EU and ROHS 2011/65/EC & 2015/863 & 2017/2102 regulations.

The declaration of conformity can be found at:

www.leicke.com



CONTACT

If you have any questions, please feel free to contact us.

PRODUCTION & WHOLESALE

LEICKE GmbH
Stöhrerstraße 17
04347 Leipzig
Germany

Web: www.leicke.com

Mail: info@leicke.com

