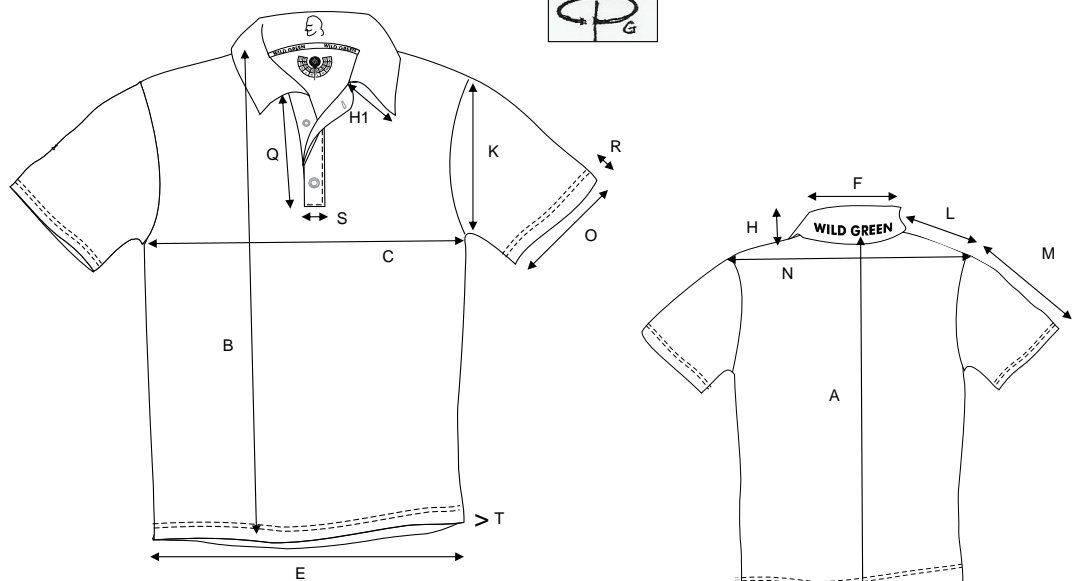


# PRODUCT INFORMATION SHEET

## MEASUREMENT CHART

<b>COLLECTION:</b>	<b>WILD GREEN</b>	<b>SIZE RANGE:</b>	<b>A</b>
<b>STYLE:</b>	<b>Mens poloshirt</b>		
<b>STYLE#:</b>	<b>general MC</b>	<b>UPDATE:</b>	<b>March 2019</b>



\*P\* is not shown on sketch

			should be	is	should be	is	should be	is	should be	is	should be	is	should be	is	should be	is	should be	is	should be	is
	SIZE		44/XXS	46/XS	48/S	50/M	52/L	54/XL	56/2XL	58/3XL	60/4XL									
后中身長(后領底度)	A	centre back length	69,0		70,0		71,0		72,0		73,0		74,0		75,0		76,0		76,5	
前身長(領點點度)	B	front length																		
1/2胸闊	C	1/2 chest width	50,0		52,0		54,0		56,0		58,0		60,0		62,0		64,0		66,0	
半腰闊(領點點度落40cm)	D	1/2 waist width/ 40cm fr. highest shoulder pt.	(Ladies only)																	
1/2腳闊	E	1/2 hem width	48,0		50,0		52,0		54,0		56,0		58,0		60,0		62,0		64,0	
領寬闊	F	back neck width																		
領頂全圍闊	G	collar circumference	38,0		40,0		42,0		44,0		46,0		48,0		50,0		52,0		54,0	
后中領高	H	collar height (c/back and not folded)	6,5		7,0		7,0		7,0		7,0		7,0		7,5		7,5		7,5	
前中領高	H 1	collar height (c/front)	6,0		6,5		6,5		6,5		6,5		6,5		7,0		7,0		7,0	
半夾直度	K	1/2 armhole straight	made by pattern maker																	
單邊膊闊	L	shoulder width	made by pattern maker																	
袖長(膊頂度落)	M	Sleeve length	24,0		24,5		25,0		25,5		26,0		26,5		27,0		27,5		28,0	
全袖長(領膊頂度落)	L+M	Sleeve length raglan																		
全邊膊闊	N	shoulder-shoulder	41,0		42,0		43,0		44,0		45,0		46,0		47,0		48,0		49,0	
半袖口闊(外)	O	1/2 sleeve cuff width	16,5		17,0		17,5		18,0		18,5		19,0		19,5		19,75		20,0	
前領深	P	front neck drop	8,0		8,25		8,50		8,75		9,00		9,25		9,50		9,75		10,00	
	Q	front placket length / also front zipper visible length	17,0		17,0		17,0		18,0		18,0		18,0		18,0		18,0		18,0	
	R	sleeve cuff height	2,0		2,0		2,0		2,0		2,0		2,0		2,0		2,0		2,0	
袖口高(外)	S	front placket width	2,5		2,5		2,5		2,5		2,5		2,5		2,5		2,5		2,5	
腳高	T	hem height	2,0		2,0		2,0		2,0		2,0		2,0		2,0		2,0		2,0	
外下袋鍊長/訂	U	hem slit length																		