



Imagine



DARK METAL

- **Target Group:** Male
- **Theme:** A modern design which combines with the nobility of black.
- **Segment:** Youth
- **Features:** Black emboss - canyon metal emboss.
- **Age Range:** 12-24 Age
- **Certificate:** TSE

DARK METAL



Our bedstead has a leather coated hand-made bed-head which is neatly sewn by our masters.
Anti-slip tape under the bed provides the bed fixed.

DARK METAL



Friend bed module may be added under this bed when desired.
It is in compliance with the 100x200 cm bed of the Dark Metal series.

DARK METAL



On our Bedstead, there is a hand-made pocket in which you can place your stuff you want to have near while you sleep at night.



On our bedstead, there is a dual-entry USB port that can charge smart devices.



Our bedstead has a leather coated hand-made bed-head which is neatly sewn by our masters.

DARK METAL



It has a deep drawer and shelf. It closes softly and silently by the help of its brake system and is safe against possible accidents.



Beside our night-stand, there is a sheet area where bedside books can be put.

DARK METAL



There are 4 drawers and 2 leather cells where little accessories can be put. Inside of our drawers has large volume each having a storage capacity of 30 kg.



Our drawers with variable sizes are quite practical to use for different purposes.



Our dresser is enriched with hand-made leather handles. It closes softly and silently by the help of its brake system and is safe against possible accidents.

DARK METAL



Our wardrobe has two doors and sliding. Our sliding wardrobe provides storage convenience by the help of its inner drawers. There are ventilation capsules in the cabinet that allow the clothes to vent.



We maximize storage area with 2 drawers in our wardrobe. We create useful storage areas with shelves on different sizes.

DARK METAL



Our wardrobe is wide, has 3 doors and 1 drawer. Perforated sheet material is used at the door of the cabinet which allows cabinet to get air. Our wardrobe is enriched with hand-made leather handles.



Our wardrobes have wall fixing apparatus on them. There are ventilation capsules in the wardrobe that allow the clothes to vent. There is a metal hanger on the door for hanging stuff practically.

DARK METAL



The portable shelf module can be used as a hanger outside the wardrobe. Portable shelf is compatible with both of our wardrobes. Portable shelf meets the extra shelf needs of users. Portable shelf can be used in Medium Wardrobe, or sliding door or outside the wardrobe.

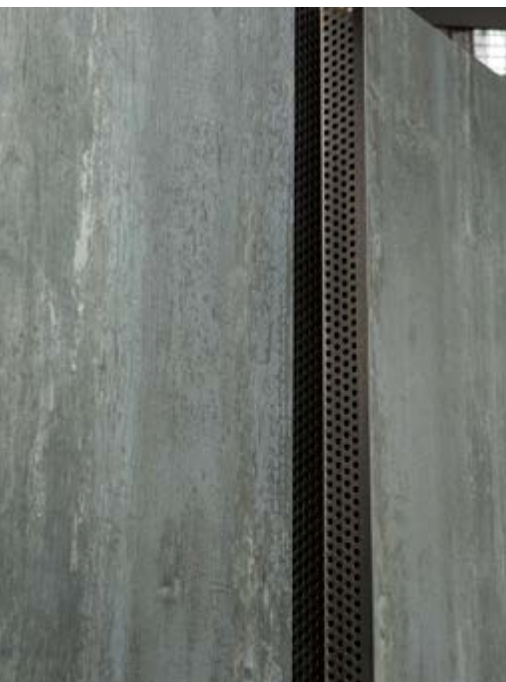
DARK METAL



Interior of our drawer has large volume having a storage capacity of 30 kg.



in our wardrobe, there is a hanger attachment and leather hook on it.



Perforated sheet material is used at the door of the cabinet which allows cabinet to get air.



Air ventilation detail on the sliding door.



Practical and useful hanger.

DARK METAL



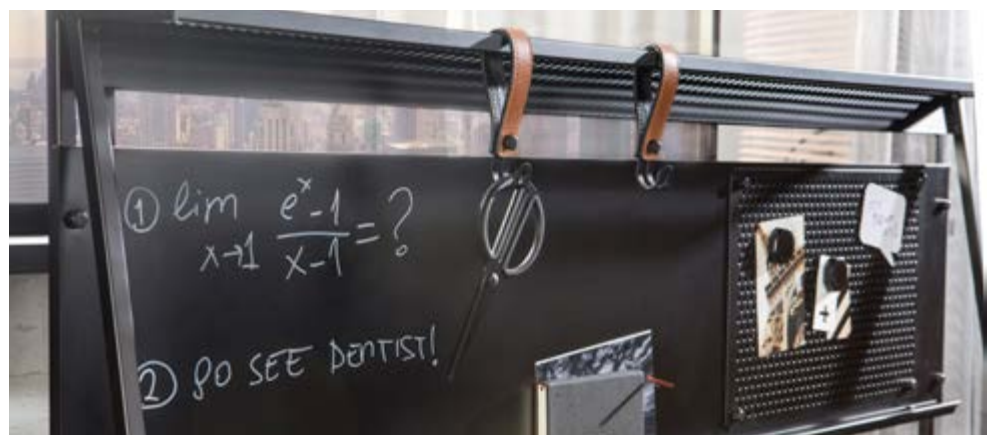
Top tray of our table is in suitable dimensions for studying.
Study unit module may be assembled on the desk when requested.
There is a shelf under our table where books can be put.



On our unit, there is a leather cell where small items can be put.



Our unit has a dual entry USB input, charging features and technologically equipped intelligent unit characteristics.



On our unit, metal board is available for hanging notes.
There is a black-board that can be used with chalk or chalk pen to get notes on our unit. A chalk pen is available on our unit.
On our unit, there is a shelf where small items can be put.

DARK METAL



There are leather handles which are hand-made on the table.
Our table has a drawer and two partitions.



There is a project bag near our desk to hang project papers.



There are leather hooks which are hand-made on the study unit.





LARGE SLIDING WARDROBE

W: 162 x H: 210 x D: 58 cm
6 Packets • 170 kg • 0,433 m³
20.52.1003.00



LARGE WARDROBE

W: 132 x H: 210 x D: 62cm
6 Packets • 134 kg • 0,359m³
20.52.1002.00



BOOKCASE WITHOUT DOOR

W: 40 x H: 187 x D: 48cm
1 Packet • 18 kg • 0,057 m³
20.52.1105.00



XL BED (120x200 cm)

W: 135 x H: 105 x D: 220cm
3 Packets • 89 kg • 0,733 m³
20.52.1302.00



L BED (100x200 cm)

W: 115 x H: 105 x D: 220cm
3 Packets • 80 kg • 0,652 m³
20.52.1301.00



PULL-OUT BED (90x190 cm)

W: 194 x H: 24 x D: 103cm
2 Packets • 35 kg • 0,078 m³
20.52.1303.00



DRESSER

W: 78 x H: 88 x D: 48cm
2 Packets • 49 kg • 0,105 m³
20.52.1201.00



NIGHTSTAND

W: 55 x H: 53 x D: 40 cm
1 Packet • 14 kg • 0,039 m³
20.52.1601.00



CAISSON

W: 40 x H: 58 x D: 38 cm
1 Packet • 15 kg • 0,039 m³
20.52.1602.00



STUDY DESK

W:134 H:80 D:62 cm
2 Packets • 38 kg • 0,138 m³
20.52.1101.00



STUDY UNIT

W:134 H:66 D:16 cm
2 Packets • 11 kg • 0,184 m³
20.52.1102.00



BED COVER (100-120 cm)

W: 160 x D: 235 cm
1 Packet • 2,9 kg • 0,061 m³
21.04.4414.00



SHEER

W: 160 x H: 260
1 Packet • 0,4 kg • 0,002 m³
21.05.5201.00

CURTAIN

W: 160 x H: 260
1 Packet • 0,9 kg • 0,002 m³
21.05.5301.00



CARPET

W: 135 x H: 200
1 Packet • 3,8 kg • 0,054 m³
21.07.7686.00



CHAIR

W:54 H:83 D:54
1 Packet • 3,8 kg • 0,208 m³
21.08.8483.00



- The colors of Black Embos and Canyon Metal which we started to use recently are used in the series. The series are mainly made of metal materials. 2 mm PVC and 0.40 FOLY were applied to certain areas of the products. Tandem rails have been used in the drawers of the series. Cilek logos are black metal. The used handles are made from leather and connected with metal connections. Perforated sheet metal has been used in the product, as different from the other series. Places which it is used are cupboards, work table unit, block with drawer, dresser and bedstand.
- Metal feet are used for the work table. The newly designed partitions with leather covers are used on the table. There is also an USB charger on the table. At the same time, the phone and tablet can be charged with the USB charger. At the side of the table, a pocket made from leather application was made to put magazines, books and so on.
- Metals and perforated metal plates are used on the working unit. There is a black board division on the unit. Chalk can be used on the black board. Notes can be attached on the perforated metal connected to the blackboard with magnet. There is an aluminum pencil for putting pen. On the upper part leather + metal coupled hooks are used.
- Metal feet are used under the bedstead. Bed side of the bedstead, unlike other products, is coated with perforated leather and the sides are softened. There is also a USB charger on the leather head that is used on the bedside of the bedstead. At the same time, the phone and tablet can be charged with the USB charger. Zipper is added only for decoration purposes. In the middle of the bedside there are right and left pockets. There is also a leather pocket that can be detached and attached to the bedside. Thanks to this, you can prevent your electronic device you are charging from disturbing you by putting it in this partition.
- Metal is used as front feet of the dresser. Perforated metal sheet is used in front of the upper drawer. Partitions with leather cover is used on the dresser. There is earthquake fixation apparatus.
- Ventilation holes with decorative ventilation covers have been applied on the rear of the wardrobe. Self-slowing hinges are used on the right door of the wardrobe. Standard detachable retarder is used on the hinges on middle and left door. Metal is used as feet of the wardrobe. Decorative perforated sheet metal application is on the right door. There is earthquake fixation apparatus.
- Metal is used as front feet of the bedstand. Perforated sheet metal pocket is used on the right side of the bedstand.
- There is a cushion with gripper that can be easily removed and attached on the drawer block. Decorative perforated sheet metal is used in front of the shelves. It can be used easily in the wardrobe and also as a bedstand module on every side of the room.



USED MATERIALS :

- It has been manufactured from melamine chipboard with thickness of 25, 16 and 8 mm and which have E0 standards.
- The straight and curved edges of the sheets are covered with 0,40 and 2 mm thick pvc foil with polyurethane based adhesive.
- Self-slowng hinges, hinges with spring and retarders are used on the covers.
- The drawers are equipped with tandem partially opening rails and have 30 kg load capacity.
- Metal surfaces are electrostatic powder coated and have 10 years' rust warranty.
- The plastic parts used in the series are made by injection from abs raw material, and do not pose any threats for human health.

PRODUCT FEATURES :

- Its design is conforming to the safety, health, ergonomic conditions of TUV GS (Europe) standards.
- Connection elements of suppliers such as Hafele-Hettich-Samet-Blum, conforming to GS and tse standards are used.
- Bedsides of the bedsteads are covered with leather.
- Wall fixation apparatuses have been used to prevent the wardrobe and dresser from falling over